

ArchDailyProjectsCoffee ShopUnited KingdomEbury Edge Community Center / Jan Kattein Architects

## Ebury Edge Community Center / Jan Kattein Architects



Curated by Paula Pintos

### COFFEE SHOP, COMMUNITY CENTER, OFFICES · CITY OF WESTMINSTER, UNITED KINGDOM

Architects: Jan Kattein Architects

Area : 600 m<sup>2</sup>

Year : 2020

Photographs : Diane Auckland - Fotohaus

Manufacturers : Ratonel, Dulux AzkoNobel Trade, Fermacell, Flight Timber, Forbo, LAYHER, Resincoat

Structural Engineer : Arup

ME Engineer : Arup

Quantity Surveyor : Gardiner + Theobald

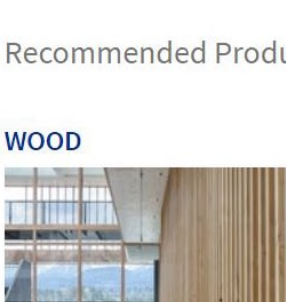
Contractor : H.A. Marks

#### MORE SPECS



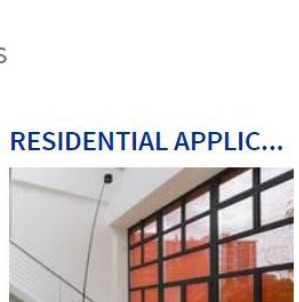
#### Recommended Products

##### WOOD



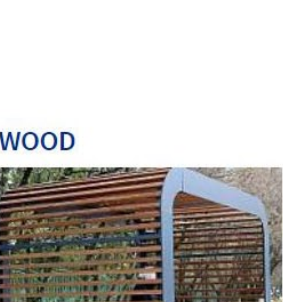
EGGER  
Wood-based materials in EGGER...

##### RESIDENTIAL APPLIC...



BANDALUX  
B-Box Roller Blinds in Loft Columnella

##### WOOD



Lunawood  
Thermo Timber and Industrial...

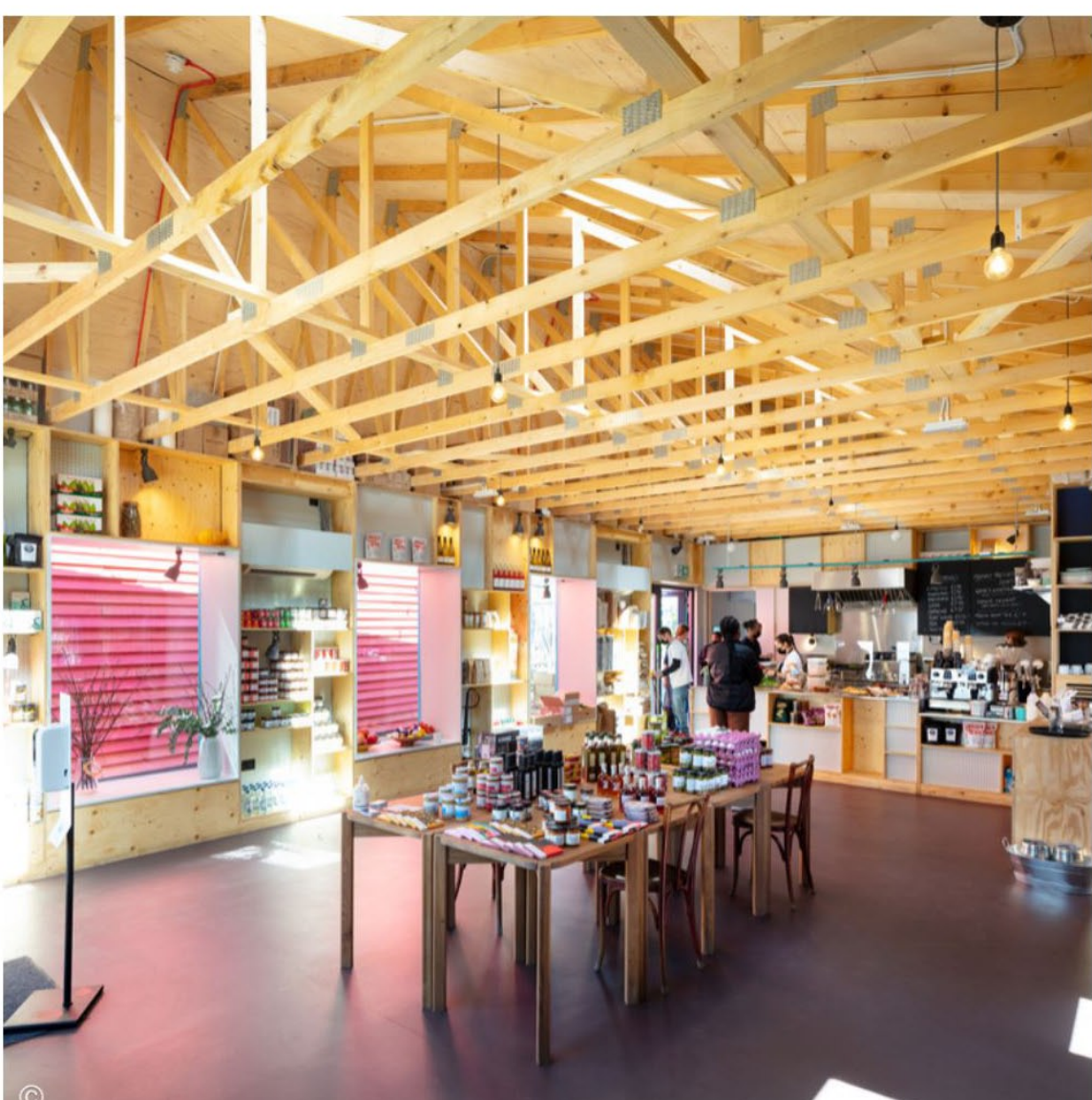
##### RESIDENTIAL APPLIC...



Fastmount®  
Heavy Duty Panel Fastener at...



Text description provided by the architects. Ebury Edge comprises temporary affordable workspaces, a café, and a community center to provide a continuous place for residents old and new to meet as the Ebury Bridge Estate is re-developed phase by phase. The Ebury Bridge Estate had been identified by Westminster City Council as urgently requiring improvement to homes and the external environment. Working closely with a representative steering group, the City Council first established a right of return for all residents before developing proposals for the redevelopment of the estate. Unusually, Westminster is committed to the delivery of new community facilities in advance of the principal scheme.



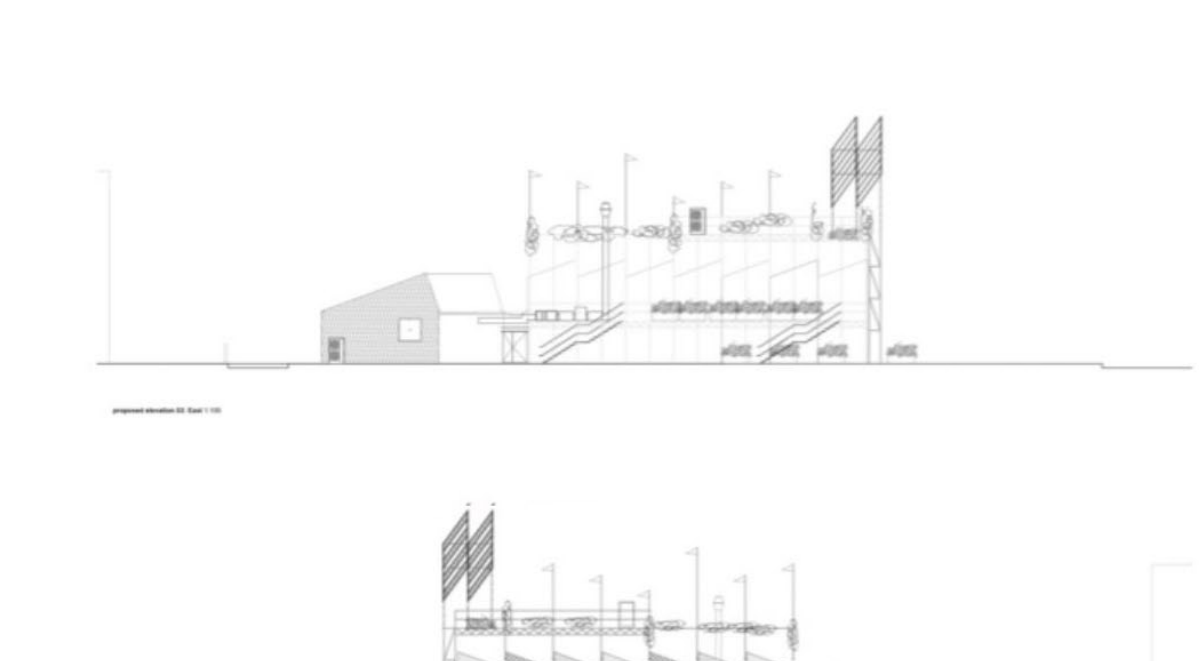
JKA were commissioned to work closely with residents to establish the brief. Interviews with key stakeholders, including a local homeless charity and community garden, informed the design of an elevated planting deck and scaffold 'trellis' which place gardening at the heart of the scheme. The steering group's brief for an 'invitation' into the estate guided the design of an illuminated tower at the site's leading corner, a celebration of the scheme's civic intent.



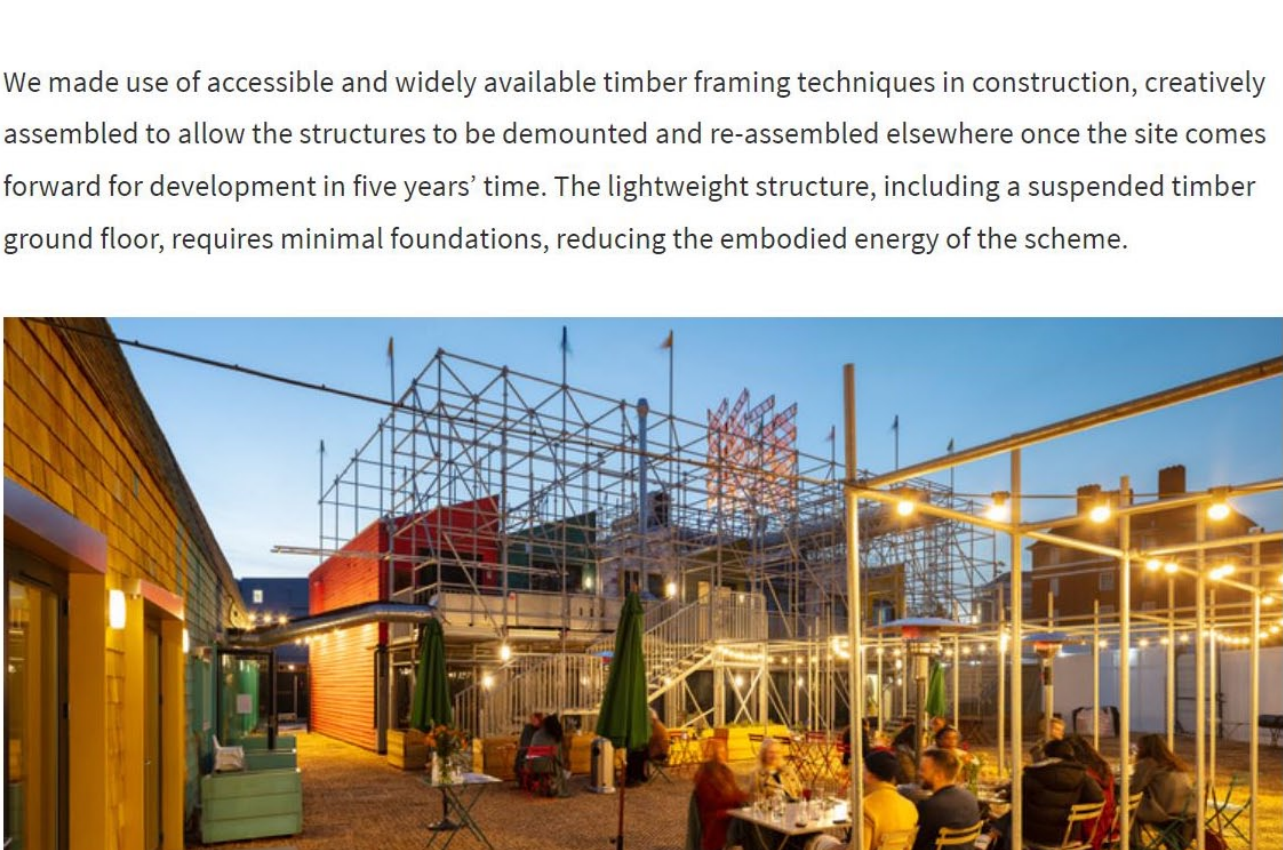
Along the street front, two stories of workspace units arranged in a colorful timber-clad terrace activate the edge of the Estate in transition. The café and community center are housed in a distinct single-story volume receding into the depth of the site. Together, the assemblage shelters a courtyard to the rear, which connects to the existing green play space to provide a much-needed social space for the estate and external seating for the café.



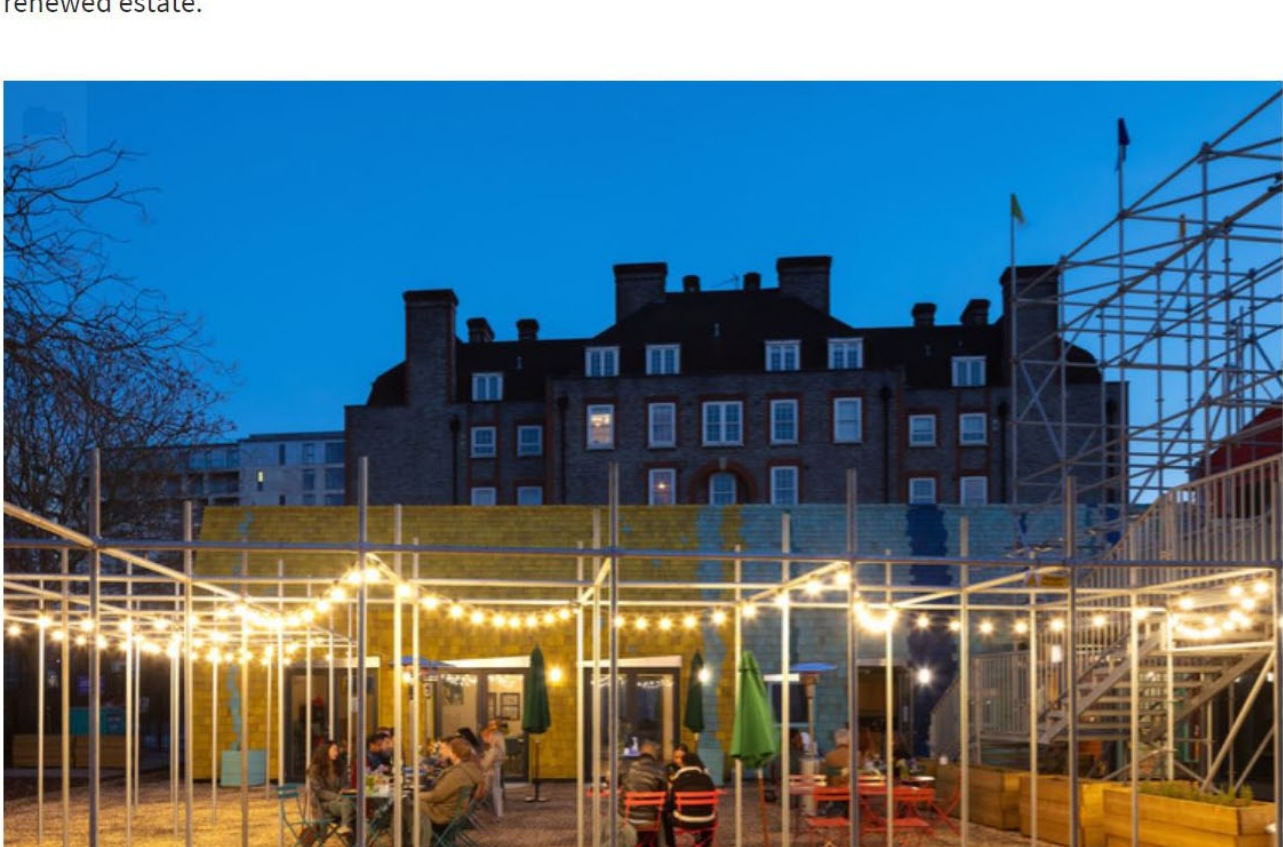
Workspaces are sized to provide an affordable foothold for small local businesses, with a variety of micro-shop fronts along the street and larger offices upstairs. The community hall shares a core with the café to allow events and functions to flow between spaces and out into the rear courtyard.



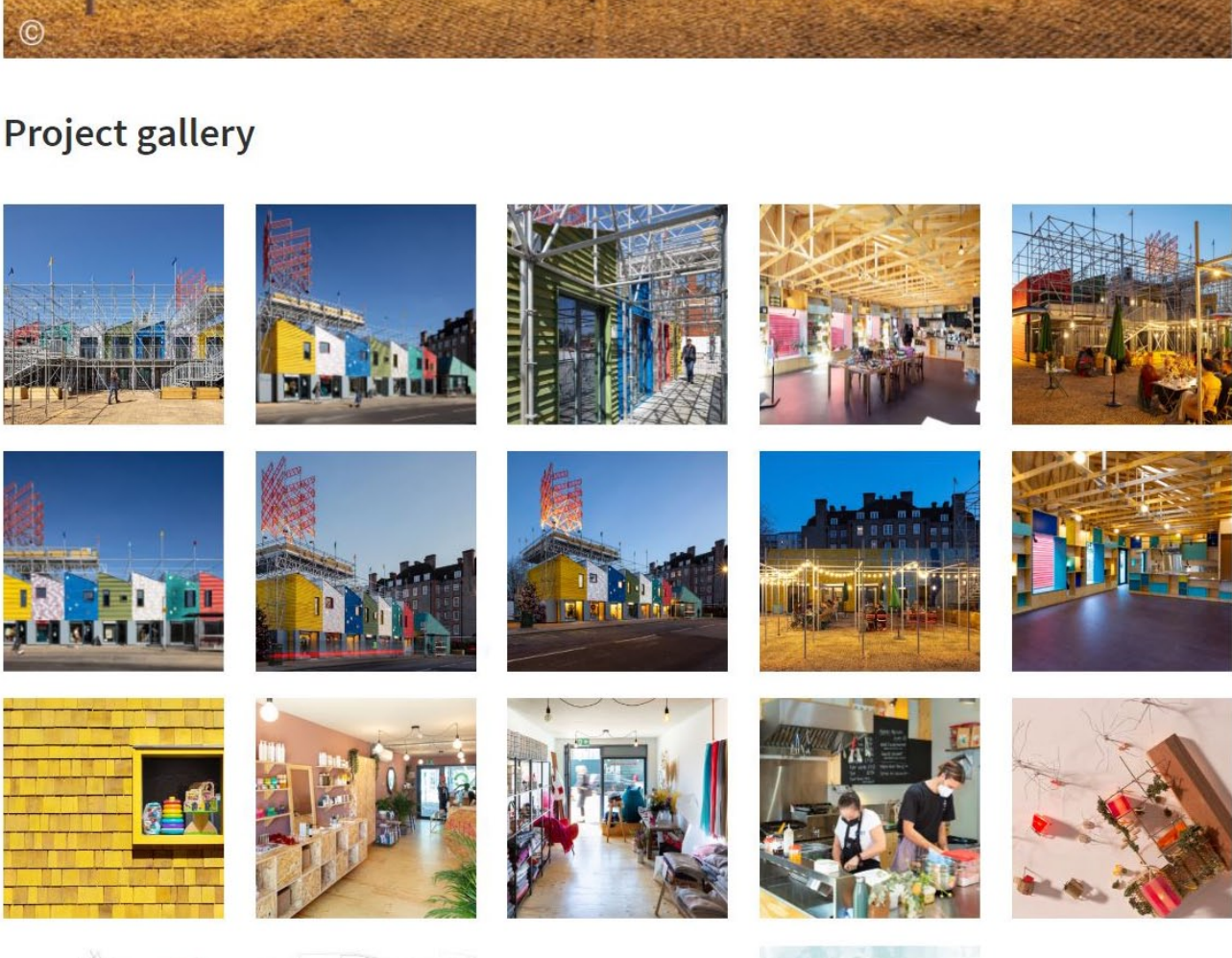
We made use of accessible and widely available timber framing techniques in construction, creatively assembled to allow the structures to be dismantled and re-assembled elsewhere once the site comes forward for development in five years' time. The lightweight structure, including a suspended timber ground floor, requires minimal foundations, reducing the embodied energy of the scheme.



Ebury Edge exemplifies a new approach that embraces the creative potential of the regeneration process itself for positive change. By creating community amenities in advance of long-term redevelopment, the scheme is creating continuity for residents, enabling local businesses, and will help to ensure that the long-term redevelopment is well-rooted in its context. The design and consultation approach has resulted in a scheme with a striking visual character that is unique to Ebury, and reflects residents' wishes to invite communities old and new to take their place on the renewed estate.

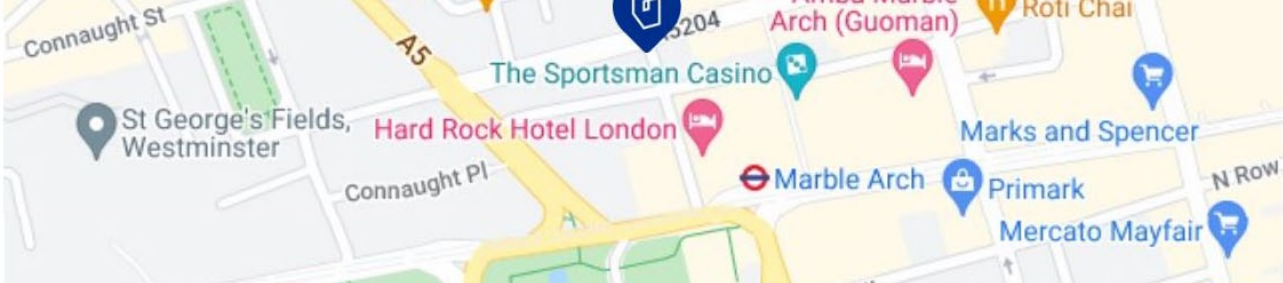
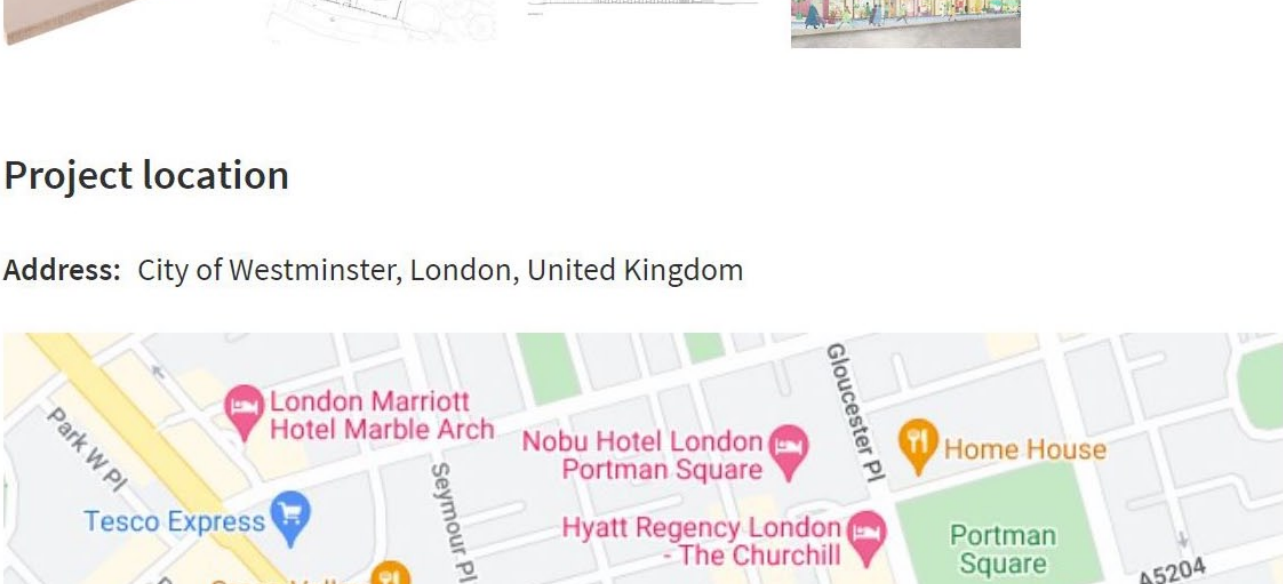


### Project gallery



### Project location

Address: City of Westminster, London, United Kingdom



### PRODUCTS

WoodSteel

### #TAGS

ProjectsBuilt ProjectsSelected ProjectsHospitality Architecture

Restaurants & BarsCoffee ShopPublic ArchitectureCommunity

Community CenterOfficesCity of WestminsterEnglandOn Facebook

United Kingdom

Published on April 22, 2022

DAAILY JOBS

Want to collaborate on similar projects?

Find your new Job

### MORE COFFEE SHOP



Hug & Link / Edam Architecture Design Group



PIMS Tea Shop / KIDZ



Blue Bottle Coffee Hong Kong Central Cafe / Schemata Architects + Jo Nagasaka

More Coffee Shop +

### MOST VISITED



The World's 25 Tallest Buildings Currently Under Construction



The Future of Chinese Contemporary Architecture: How is China Creating a Civic Culture For a New Society?



Tamni Hostel / PO-D Architects

### PRODUCTS



MDF Board - Fibroffit | Unilin



Mill Finished Copper: Nordic Standard | Aurubis



STENI Façade Panels in Public Buildings | STENI